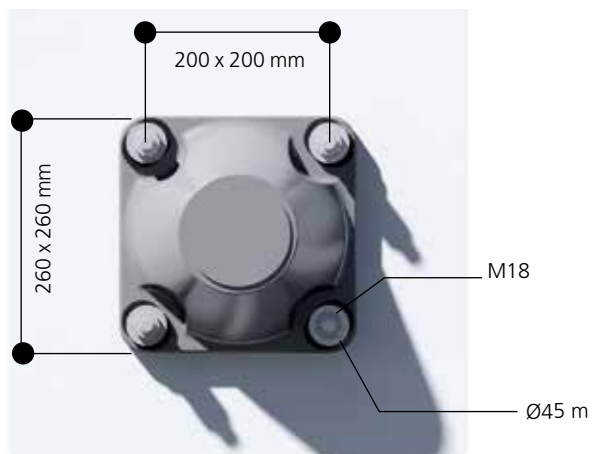
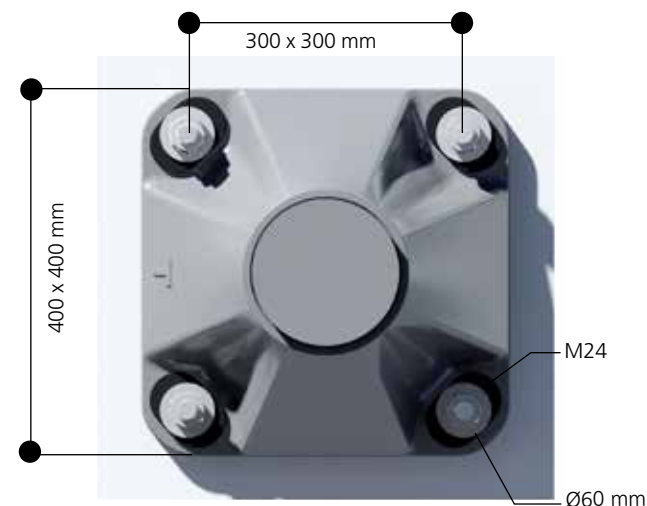


## Installation instructions



**Fixing baseplate 200 x 200 mm**  
For M18 bolts, washers L18 Ø45 mm



**Fixing baseplate 300 x 300 mm**  
For M24 bolts, L24 Ø60 mm washers  
or  
For M27 bolts, L27 Ø65 mm washers

### Anchor bolts

We offer by default galvanized steel anchoring bolts, delivered with 2 eyes nuts and 2 large washers. If using prefabricated foundation, large washers must be used.

### Insulating washers

An insulating bolts/baseplate system enabling a separation between electrolytic steel/aluminum is mandatory for aluminum lighting poles.

### Advice

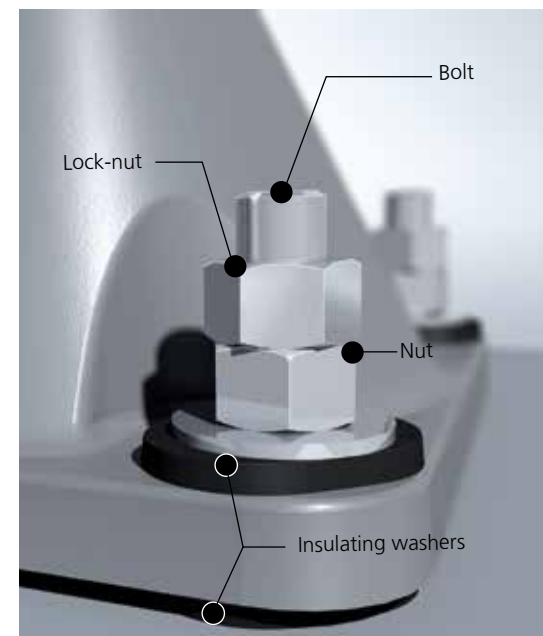
To prevent corrosion and ensure longevity for the lighting poles, it is strongly advised to:

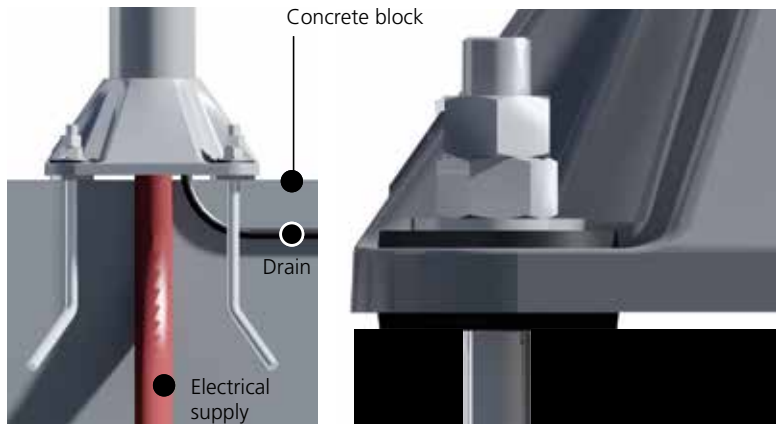
- built a groove or a drain to evacuate internal water condensation. This can be avoided with a non-covered baseplate directly fitted onto the block, thanks to baseplate raising trough inferior insulating washers.
- Protect the bolt heads and eyes nuts with grease-filled plups.



### Covering bolts and nuts

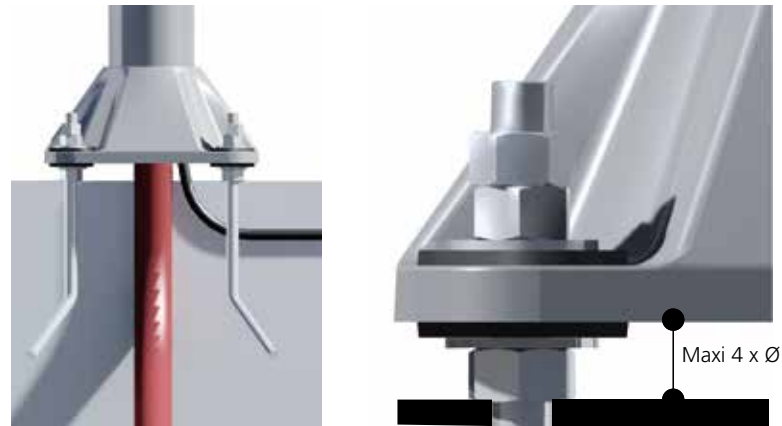
Die-cas aluminum shells covering anchoring bolts and nuts  
Available on K250 Baseplate





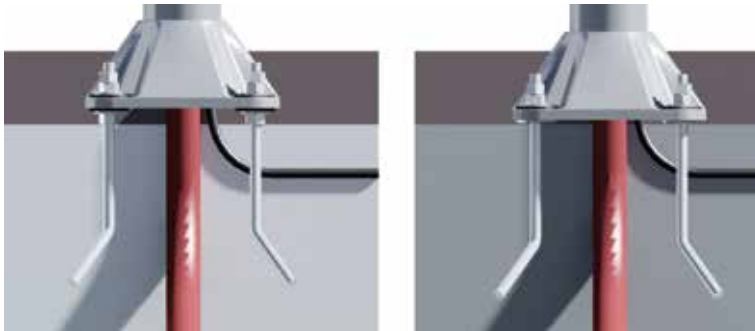
#### Direct fixing on block (recommended)

It is recommended that public lighting poles on baseplate be installed directly on the concrete foundation block if enough smooth and flat. The inferior insulating washers also allow to even out the roughness of the slab and improve the baseplate foundation.



#### Fixing on washers (strongly not recommended)

We strongly warn against using washers underneath the support slab. If however this method is used, it is essential to limit the vacant space between underneath the baseplate and the superior part of the foundation block to 4 times the diameter of the bolt and to cover this space with filling mortar.



#### Covered baseplate

##### It is recommended not to cover the light pole's baseplate.

If the light pole baseplate must be covered, it is strongly advised to ensure the considered materials are not harmful. An insulating material between the light pole base and the coating must otherwise be provided for.

Moreover, damaging shocks to the protective coating of the baseplate must be avoided during the pouring of cement/asphalt.

When light poles are fixed onto grass, it is advised to remove grass from where the support slab will be located to ease mowing and avoid corrosive action from weed killer. Covering with river sand helps drainage.

#### Storage

Poles must not be stored directly on the ground or next to a storage zone of pulverulent materials.

Appropriate ventilation must be planned for long-term storage (over three weeks) and eventual strapping removed.