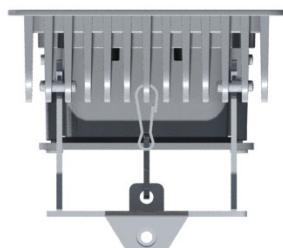
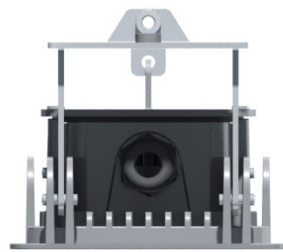


Nano² Luminaire

1 to 6m



Nano² Luminaire LED

- . Body made of cast aluminum
- . IP67
- . IK08
- . Dimensions 470 x 120 x 60 mm
- . Integrated hinge
- . Equipped with an integrated to the luminaire and easily removable LED driver
- . Cable entry through cable gland
- . Silkscreened glass
- . Heat sink integrated to the luminaire's body

Equipment

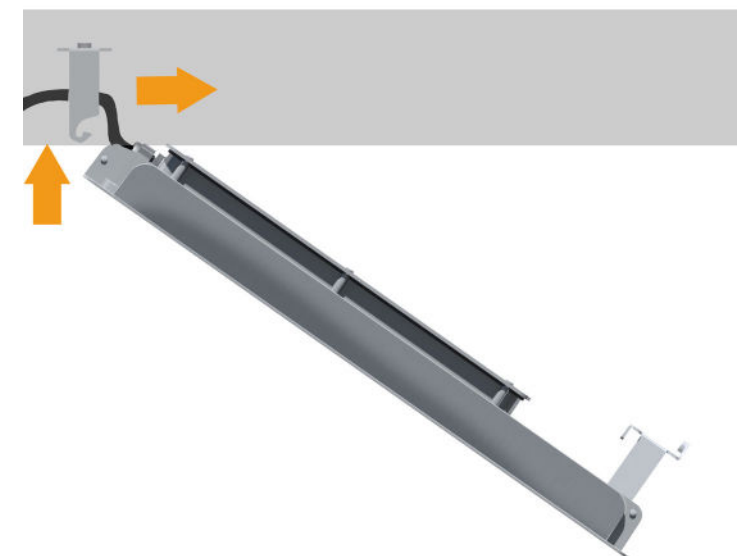
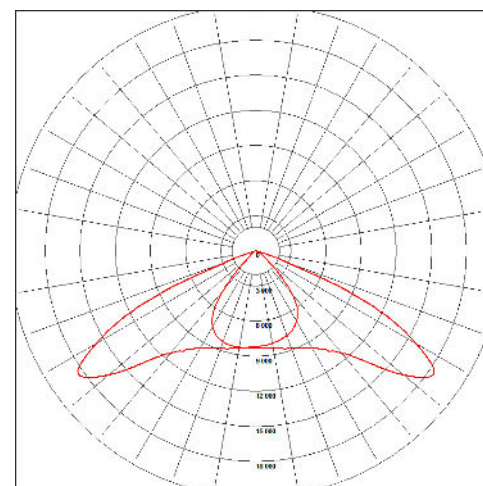
- . 30 Leds
- . Optical prism: asymmetric
- . System power: 35W
- . Color T° : 3000°K/4000°K
- . Classe 1 (Classe 2 possible)
- . DALI available 0-10V
- . Luminaire wired
- . Cabling by cable gland Ø13 mm
- . Certification CE, CSA/UL

Total outflow (out of the luminaire)

- . 3426 lm for 3000K (102 lm/W) ou 3523lm for 4000K

Fixing

- . Totally integrated in Mikado Nano or Shiraz K Nano

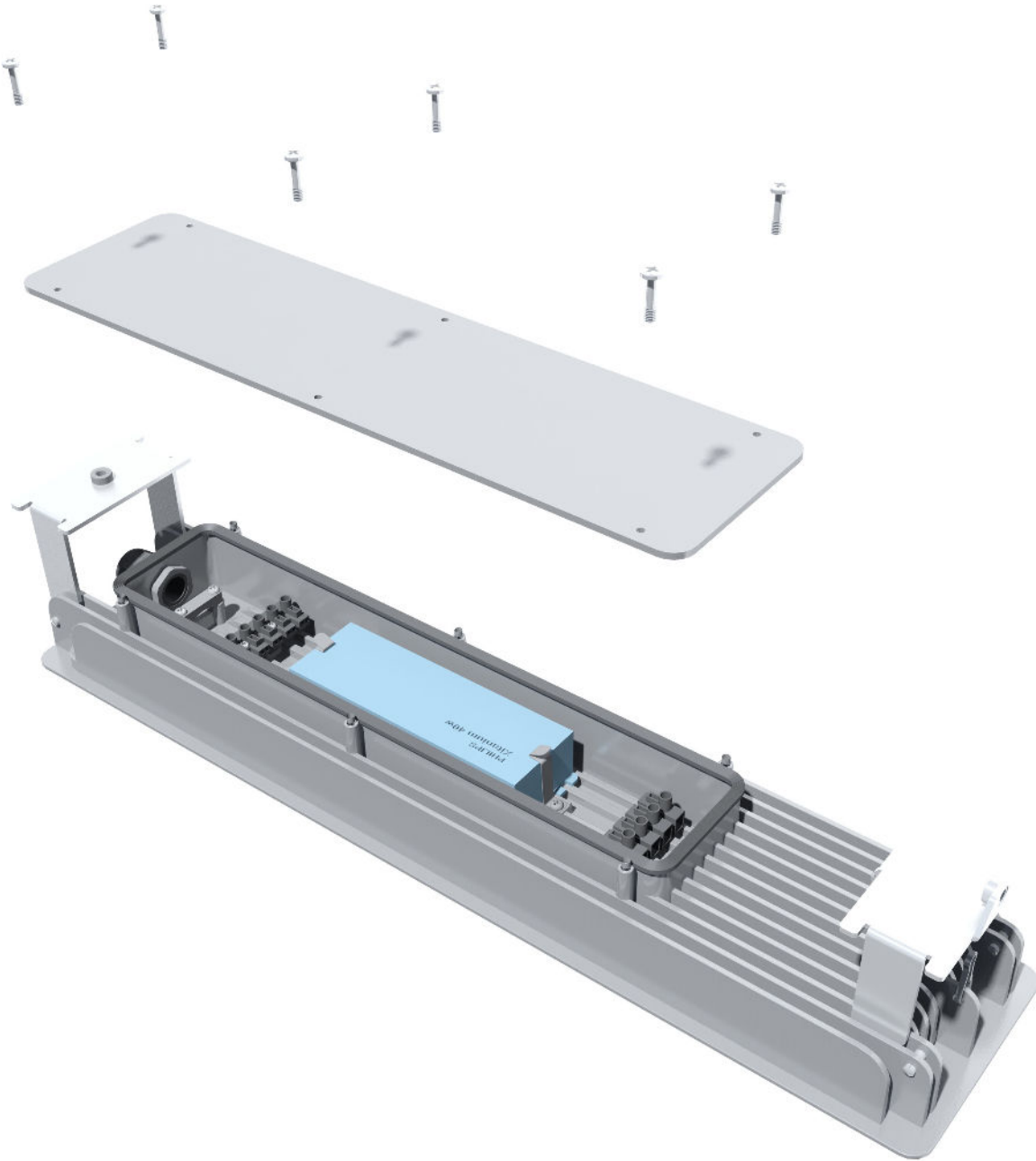


We shall retain full intellectual property to designs and documentation created for this specific project ; this data shall not be disclosed nor used without our express consent in writing. Legal action will be taken in the event of any reproduction or other violation of our property rights.

Technilum[®]
urban lighting furniture

Nano² Luminaire

1 to 6m



We shall retain full intellectual property to designs and documentation created for this specific project ; this data shall not be disclosed nor used without our express consent in writing. Legal action will be taken in the event of any reproduction or other violation of our property rights.