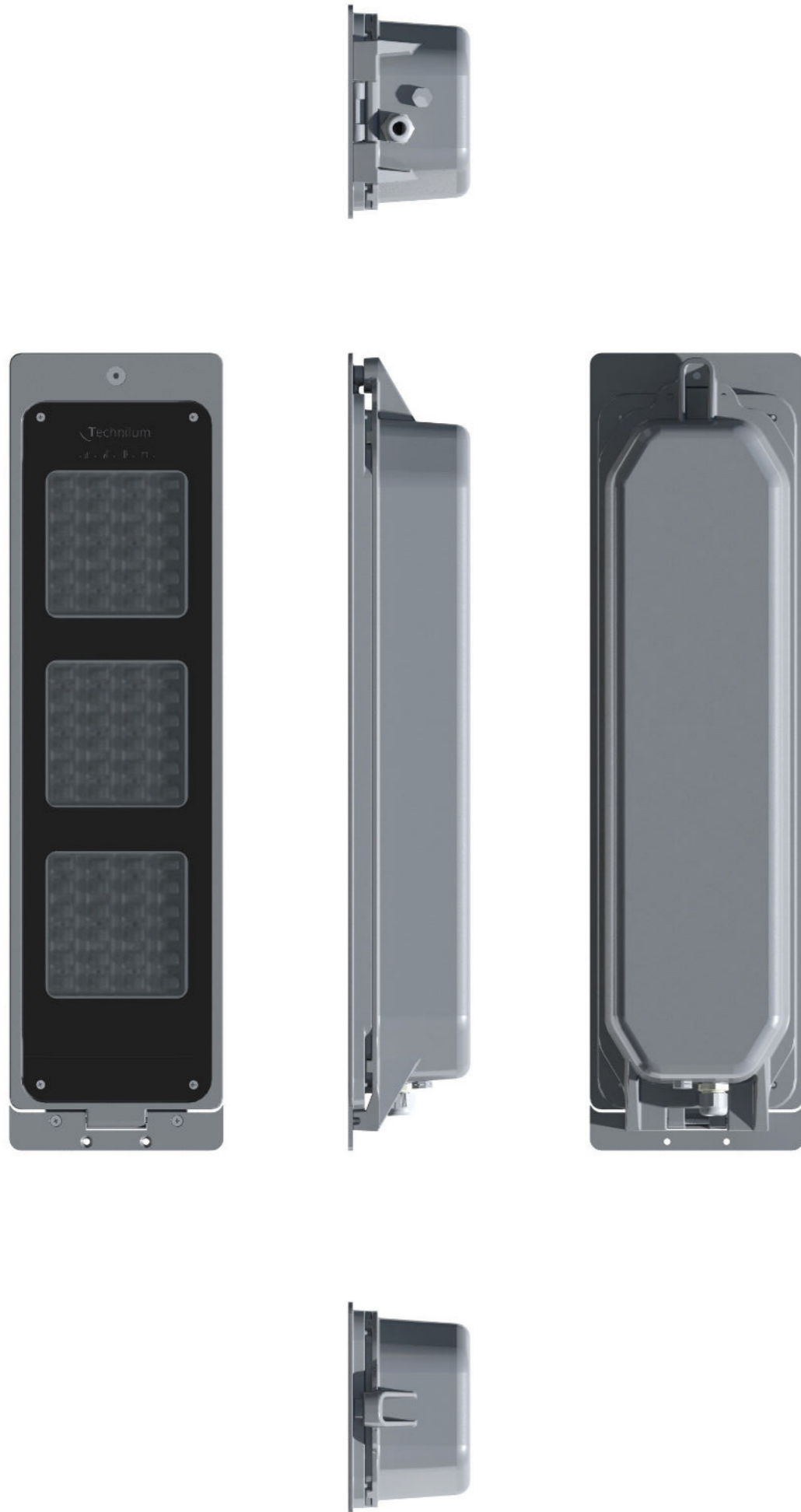


# Tempranillo

Leds version



## Tempranillo Luminaire

- . Die cast aluminum main structure
- . IP65
- . IK08
- . Dimensions 670x180x100mm
- . Integrated equipment
- . Access door with hinge
- . Silkscreened glass
- . Heat sink integrated to the luminaire's body
- . Class 1
- . Cable entry through cable gland

## Equipements

- . 24, 48 and 72 Leds
- . Leds Lifespan : 50000 to 70000h, depending on versions . Color T°: 3000°K (Other values on demand)
- . Optical prism on each LED : Road Optics (Other optic types on demand)
- . Integrated electronic lamp driver , in a dedicated compartment
- . Input voltage 120 to 277 volts
- . Use frequency : 50 to 60Hz
- . Over voltage protection : 4/4KV
- . Optional : Dimmable 1-10V or DALI compatible

## System power

- . 24 Leds : 29W
- . 48 Leds : 53W
- . 72 Leds : 78W or 102 W

## Outflow

- . 24 Leds : 2641lm
- . 48 Leds : 5282lm
- . 72 Leds : 8593lm ou 10566lm

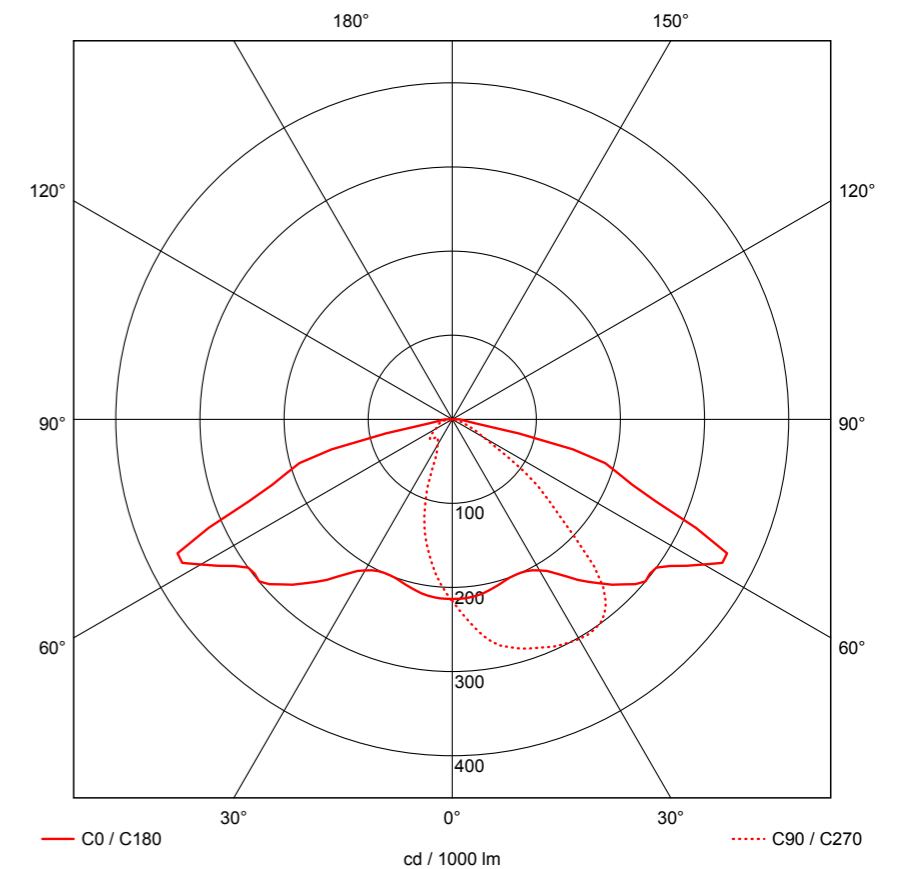
## Weight

- . 24 Leds : 8.5kg
- . 48 Leds : 9kg
- . 72 Leds : 9.5kg

## Fixing

- . Totally integrated in Shiraz or Mikado profile

Photometric diagram of Tempranillo Leds 150°

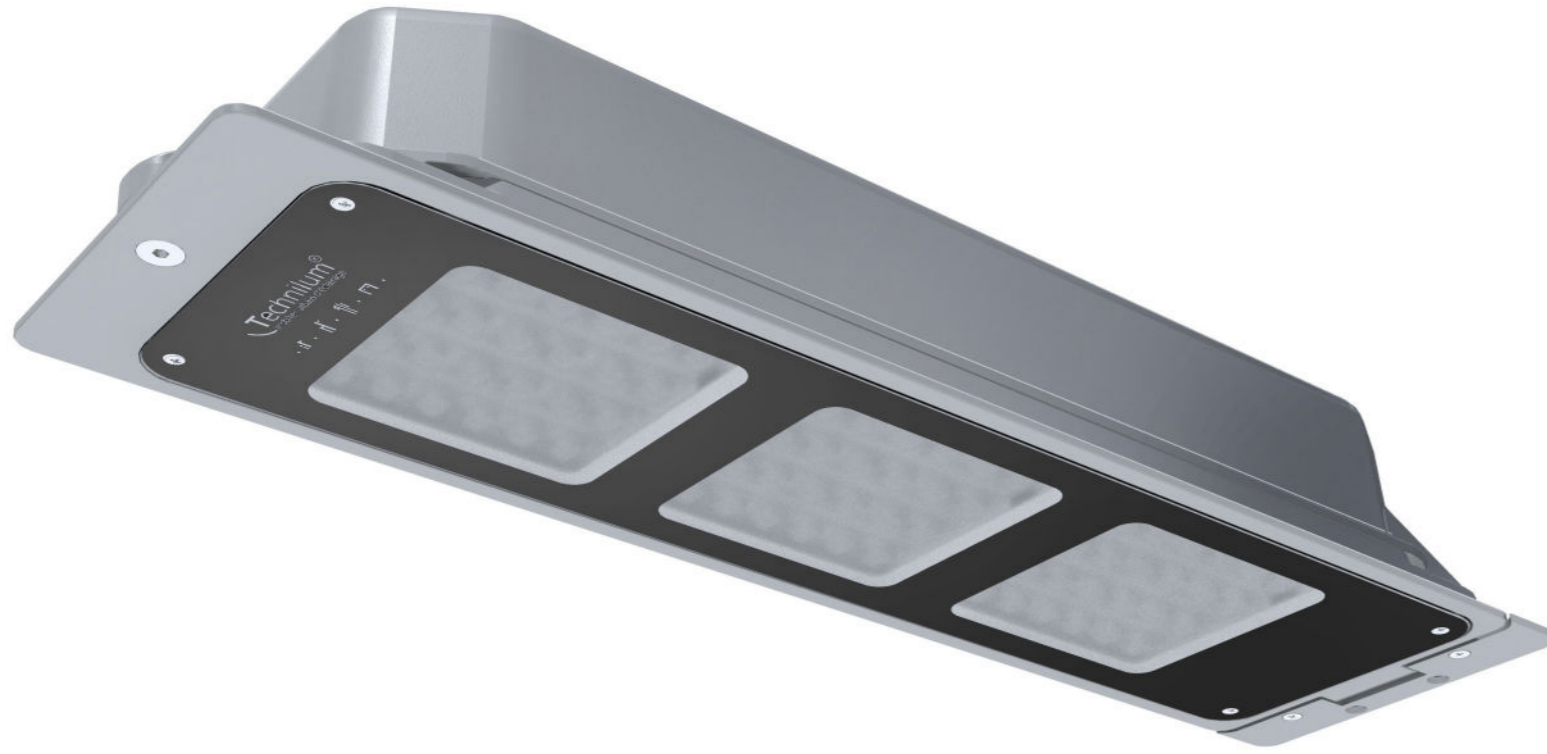


We shall retain full intellectual property to designs and documentation created for this specific project ; this data shall not be disclosed nor used without our express consent in writing. Legal action will be taken in the event of any reproduction or other violation of our property rights.

Tempranillo  
Leds version



6 to 12m



We shall retain full intellectual property to designs and documentation created for this specific project; this data shall not be disclosed nor used without our express consent in writing. Legal action will be taken in the event of any reproduction or other violation of our property rights.